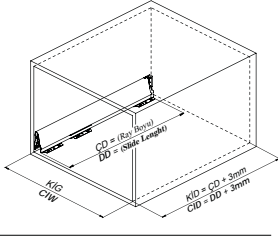
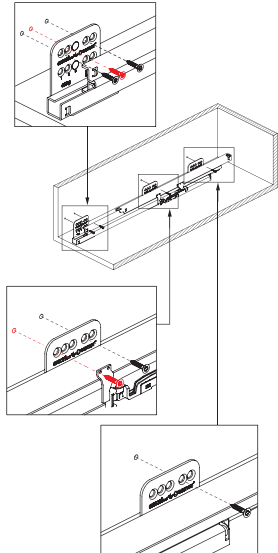


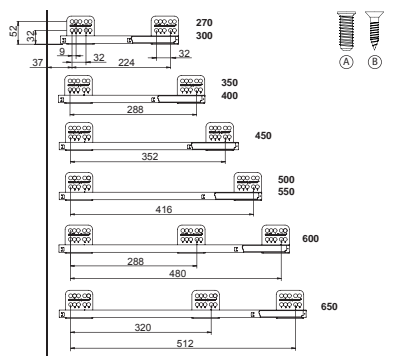
Kabin Ölçüleri  
Cabinet Dimensions



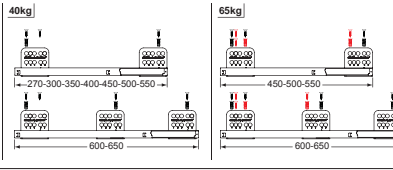
Ahşap Vidası ile Montaj  
Assembly the Slide with Wooden Screw



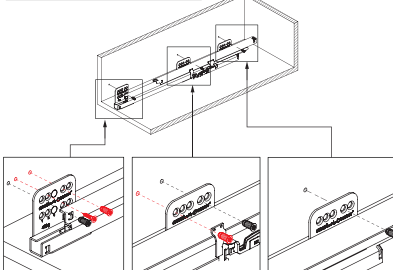
Rayların Vida Konum Ölçüleri  
Screw Location for the Slides



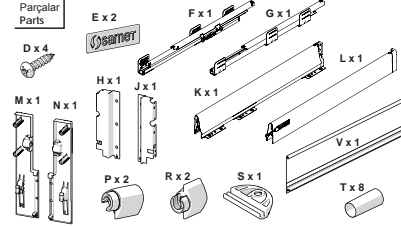
Rayı, koyu renk ile gösterilen yerlerden vidalayınız.  
Screw the slide from marked holes.



Euro Vidası ile Montaj  
Assembly the Slide with Euro Screw

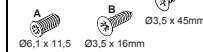


Parçalar  
Parts



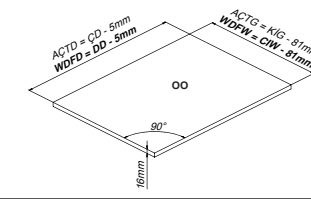
|                          |        |                        |        |
|--------------------------|--------|------------------------|--------|
| Kabin İç Genişliği       | : KIG  | Cabinet Internal Width | : CIW  |
| Kabin İç Derinliği       | : KID  | Cabinet Internal Depth | : CID  |
| Çekmece Derinliği        | : CD   | Drawer Depth           | : DD   |
| Ray Uzunluğu             | : RU   | Slide Length           | : SL   |
| Ah.Çek. Tabanı Derinliği | : AÇTD | Wd. Dr. Floor Depth    | : WDFD |
| Ah.Çek. Tabanı Genişliği | : AÇTG | Wd. Dr. Floor Width    | : WDFW |
| Ah. Arkalık Genişliği    | : AAG  | Wd. Backboard Width    | : WBW  |

Tavsiye Edilen Vidalar  
Recommended Screw



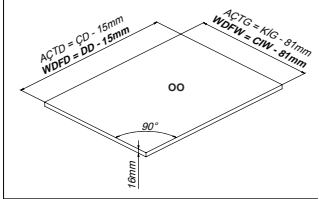
Ah. Çekmece Tabanı  
Wd. Drawer Floor

Ahşap Arkalık Uygulamasında  
Wooden Backboard Application

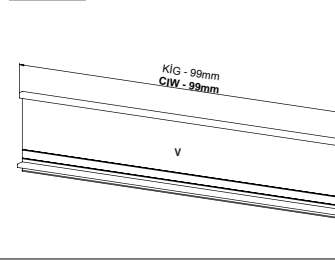


Ah. Çekmece Tabanı  
Wd. Drawer Floor

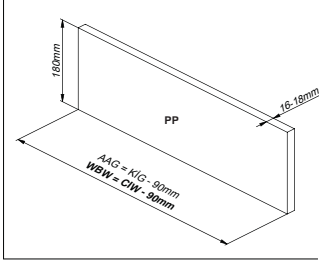
Metal Arkalık Sacı Uygulamasında  
Metal Backboard Panel Application



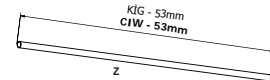
On Panel  
Front Panel

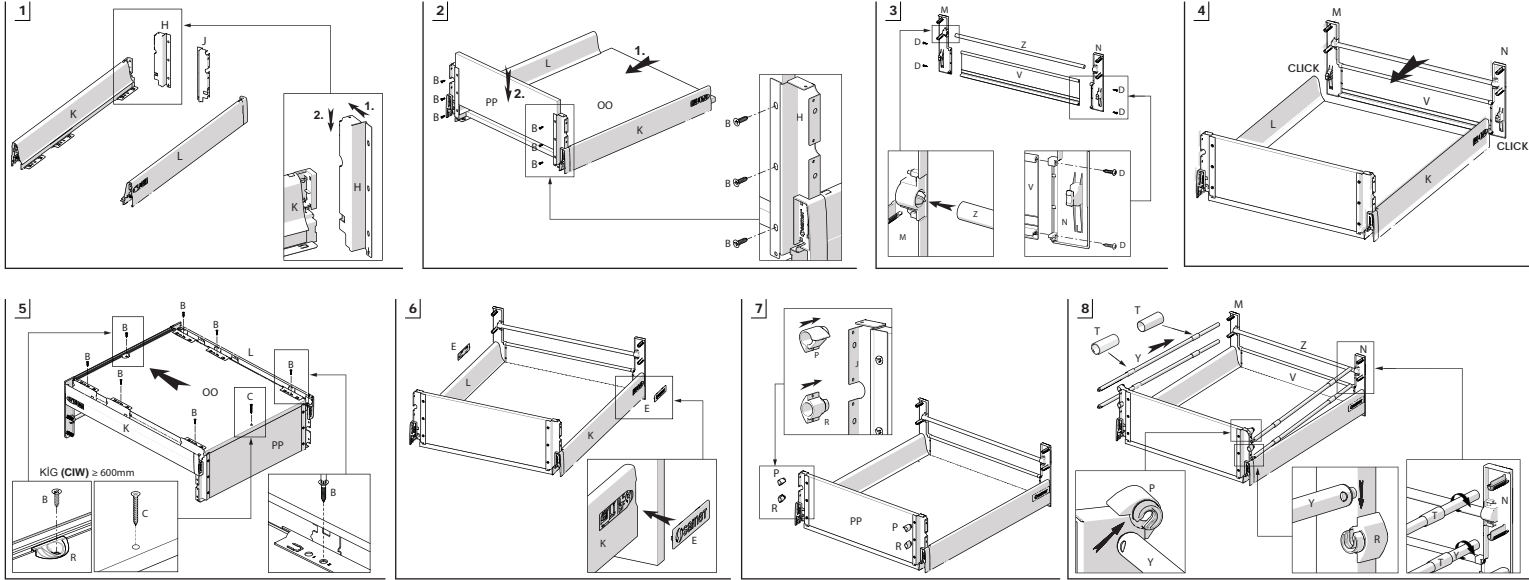


Ahşap Arkalık  
Wd. Backboard

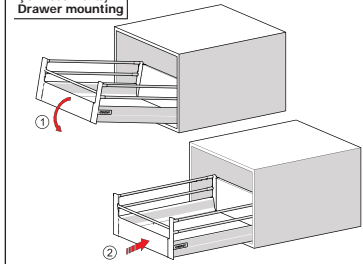


On Bordür Çubuğu Kesim Ölçüsü  
Dimension Cutting of Front Gallery Railing Bar

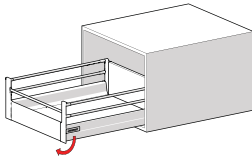




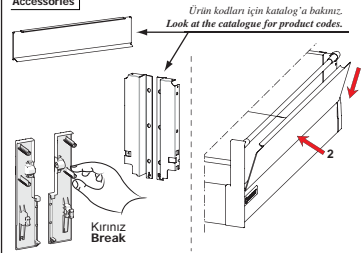
Çekmece montajı  
Drawer mounting



Çekmece demontajı  
Drawer demounting



Aksesuar  
Accessories



Kilit tırnağı kapanması durumunda | If the lock slots shut down due to system failure | 1

Ön paneli çıkarmak için | Removing the front panel | 2

