

# KANTENnews

Version 20

## Revolution on the worktop.

Digital-Edge – a milestone in edgeband design.

## Modern appearance with seamless joints.

Fusion-Edge – the high-performance edge for all joint technologies.

## KSP 2.0

Completely new – the service and product promotion from Döllken.

## Surface textures tangibly bring edgebands to life.

The new texture variations from Döllken.

## Impressive appearance with depth effect.

3D edges – the originals from Döllken for high-end furniture.

**DÖLLKEN**

A SURTECO BRAND





# Contents

- 04 **100 % freedom in design.**  
The Digital-Edge from Döllken knows no bounds.
- 06 **Revolution on the worktop.**  
Digital-Edge – a milestone in edge design.
- 08 **Modern appearance with seamless joints.**  
Fusion-Edge – the high-performance edge for all joint technologies.
- 10 **Technology report by Döllken.**  
New opportunities for contemporary furniture production.
- 12 **KSP 2.0**  
Completely new – the service and product promotion from Döllken.
- 14 **Surface textures tangibly bring edgebands to life.**  
The new texture variations from Döllken.
- 16 **Impressive appearance with depth effect.**  
3D edges – the originals from Döllken for high-end furniture.
- 20 **Resistant to scratches and marks.**  
Ultra matt edges from Döllken feature outstanding surface properties.
- 21 **The matching edge for everyone.**  
Gloss from Döllken with “Premium-High-Gloss” top coat.
- 22 **The most innovative design centre in the industry.**  
Pay us a visit in Venice!
- 24 **Sustainability makes the difference.**  
Döllken edgebands are GREENGUARD certified across the globe.





# 100 % freedom in design.

The Digital-Edge from Döllken knows no bounds.

### This is how individual edgeband design can be

For the past 40 years edgebands have fulfilled purely a functional purpose. Digital-Edge from Döllken has turned them into a genuine design element. Whether it be a company logo, lettering or creative graphical designs – it is possible for the first time to print individual designs onto thermoplastic edgebands.



Flensburg Brewery stand-up table.

The Digital-Edge turns any furniture edge into a real eye-catcher.

### Revitalisation in store design

Thanks to Digital-Edge, furniture edgebands not only look good, they also offer another major benefit – when printed with a company logo or slogan for example, they turn any shop counter, table or piece of furniture into impressive advertising space. This is generating new momentum in shopfitting and commercial property design.

### This is how easy it is:

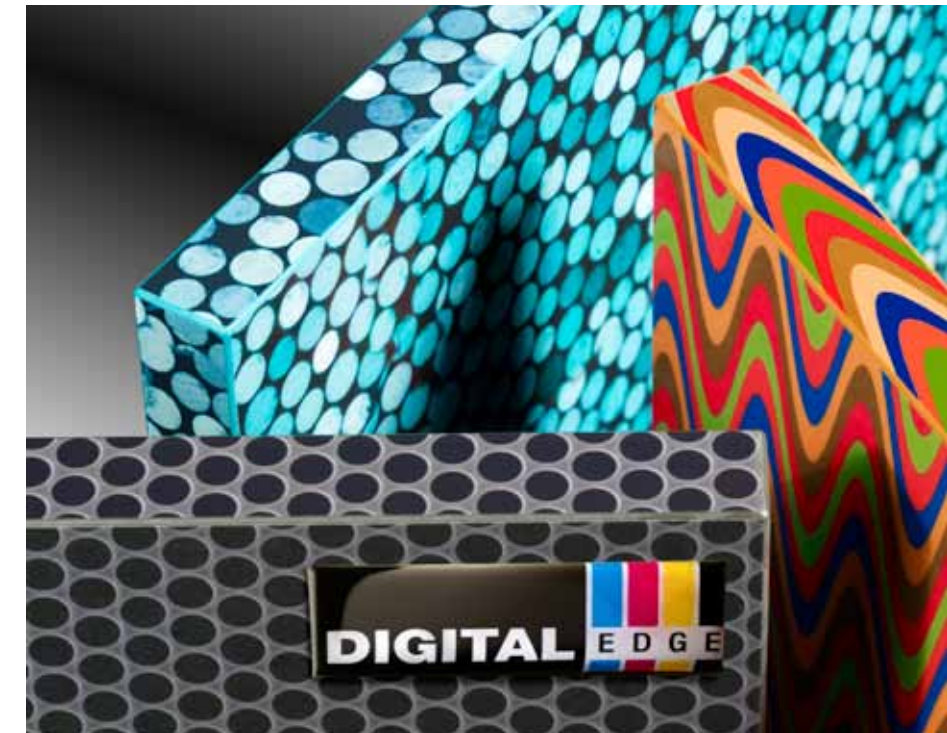
Once you have decided on an image, simply send us a file with the individual design. It will not take us long at all to then send you your very own personal edgeband.

### Pure inspiration

Those who have yet to come up with any ideas for a personally designed Digital Edge can find inspiration in Döllken's digital world of Design. Selected theme-based edge motifs provide an idea of the vast array of possibilities and ensure that design dreams become a reality.

Impressive motifs from the wide diversity of themes in Döllken's world of digital Design:

1. Culinary
2. Leisure time / sport
3. Graphics / design
4. Landscape / nature
5. Comic-themed / youngsters
6. Technology



Caribbean Pearl, Perforated Plate and Retro digital decor from Niemann Möbelteile.

## Revitalisation in store and commercial property design.



Digital edge as logo and QR code design.

### Your benefits

- **Individual:** every desired motif can be realised
- **Effective advertising:** can be used as an innovative marketing tool, such as QR code or logo edge
- **Inspiring:** large selection of designs
- **Practical:** available worldwide from just one roll

Find inspiration on [www.digital-edge.de](http://www.digital-edge.de)





## Revolution on the worktop.

Digital-Edge – a milestone in edgeband design.

**Edges are lent contemporary design and individuality**

Unusual design is also finding its way more and more onto kitchen worktops. Just recently, surface specialist Resopal had several creative kitchen worktop finishes

**When creativity moves into the kitchen.**

designed by the Italian artist Sergio Perrero. Work surfaces only become an eye-catcher between cooking pots and cutlery, however, when applied with matching edgeband designed by Döllken. Thanks to the unique decor combination, both top and edge form one harmonious unit – especially with more sophisticated designs. The unique quality with which the custom design is printed onto the edge is not the only special feature of digital print edgebands.

Repeating pattern lengths of over 2000 mm are also setting new standards in freedom of design.

### It has to be perfect

The Digital-Edge from Döllken is the icing on the cake. For sophisticated designs (for example Formica's 180fx Series), digital print technology offers the perfect solution. Technological advances make this possible. The digitally reproduced edgeband matched to Formica's Antique Mascarello, for example, is resplendent with perfect print image and is unparalleled on the market.



Resopal Animo decor.



Resopal Pronto decor.



Formica Antique Mascarello decor.



Resopal Heart Apple decor.

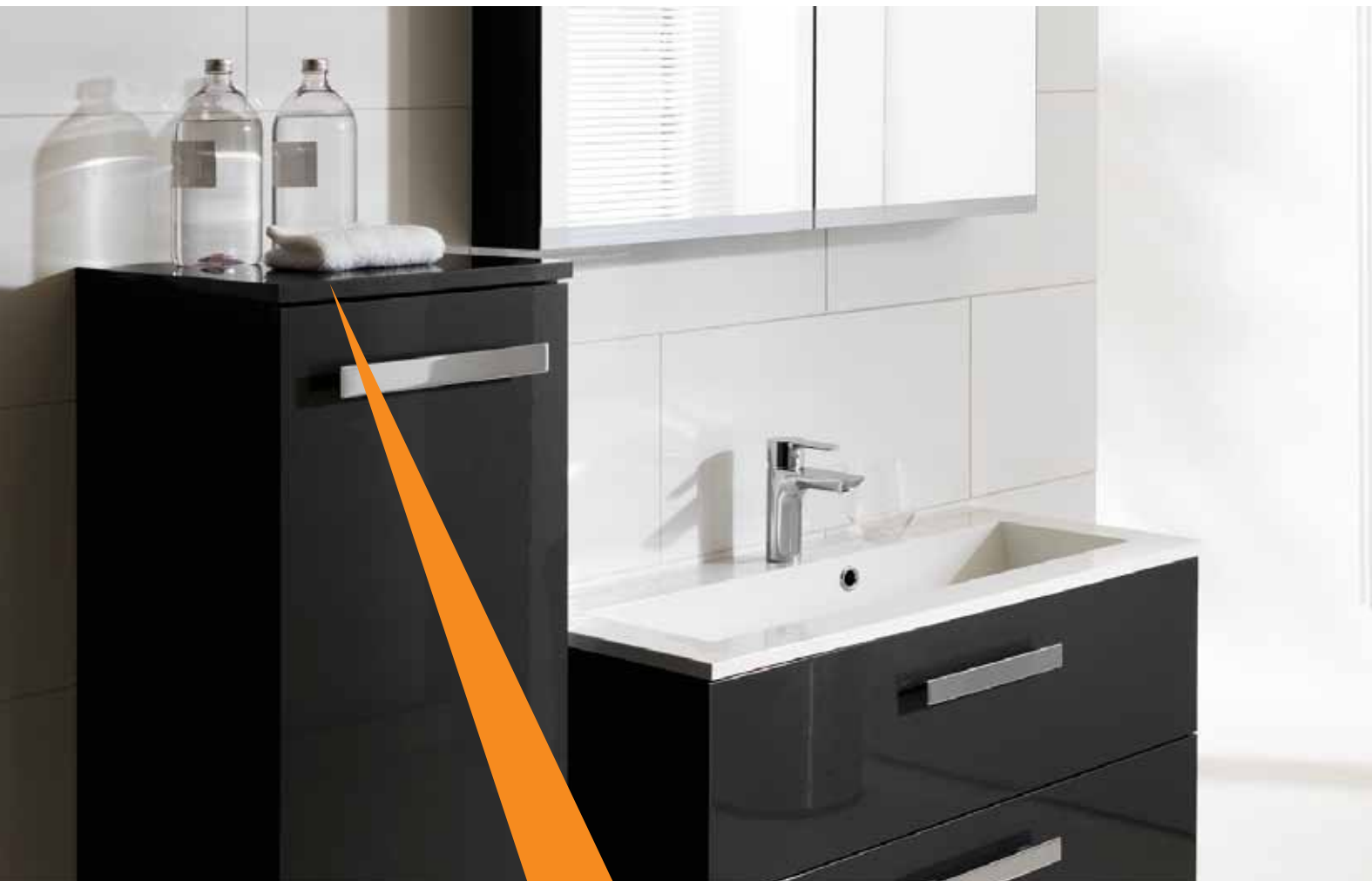
### Your benefits

- **Unique:** Repeating pattern lengths of over 2000 mm available
- **Glossy:** available from matt to high gloss
- **Innovative:** perfect decor combination for every pattern
- **Dynamic:** batch sizes from 150 m available quickly

So that no two kitchens are alike.

Find inspiration on [www.digital-edge.de](http://www.digital-edge.de)





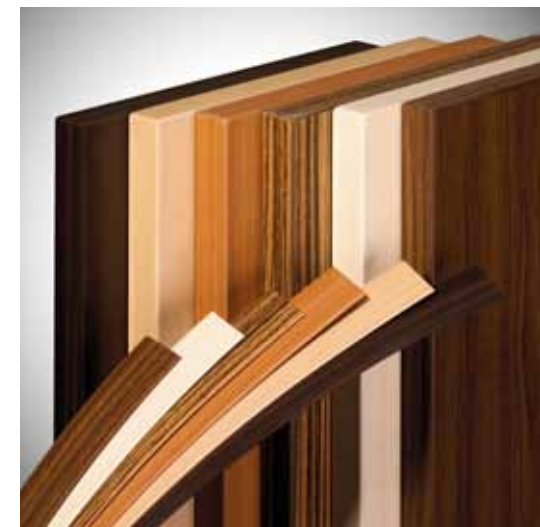
# Modern appearance with seamless joints.

Fusion-Edge – the high-performance edge for all joint technologies.

### Nothing to see here

A seamless bond between edge and worktop – Fusion-Edge makes it possible. With an innovative furniture edgeband that requires no additional hot-melt adhesive, Döllken is offering a real alternative to conventional edgeband adhesion and so is creating a revolution in small surface area coatings. From the prevention of visible glue lines through the water-

proof bonding of individual components to the optimisation of the machining process, the visual, functional and economical benefits are diverse and have already won over many leading furniture manufacturers and suppliers as genuine fans of Fusion-Edge.



Fusion-Edge as perfect decor combination.

### Innovative technology for a permanent joint

Once joined, the Fusion-Edge forms a fixed unit with all popular wooden materials. Three contemporary methods make this possible:

1. With the laser joint method<sup>1</sup>, a laser beam is formed into a line using optics when the Fusion-Edge nears the worktop. This melts the functional layer of the Fusion-Edge and it is pressed onto the edge of the board. This creates an invisible joint.
2. Using plasma technology, the reverse side of the edgeband is melted by means of nozzles.
3. Using the new hot-air technology, highly heated air melts the functional layer of the Fusion-Edge.



Modern appearance with seamless joint.

## Complete heat and moisture resistance thanks to a jointless transition.

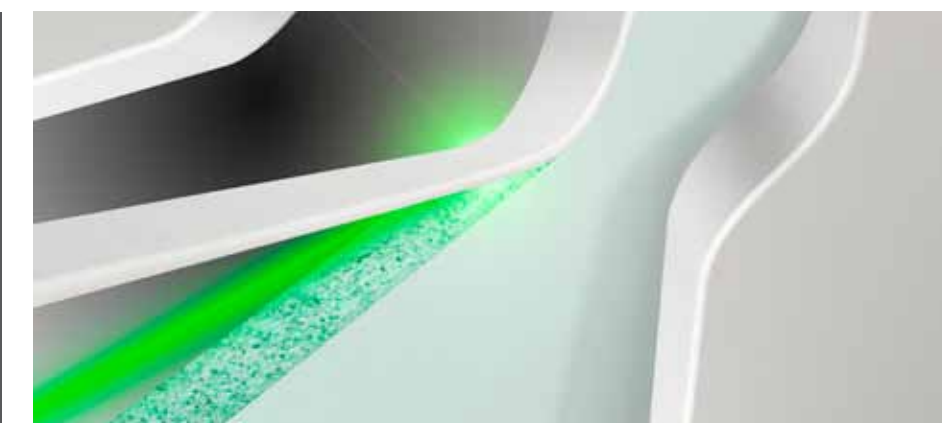
### Economically a real winner

With Fusion-Edge, the storage of individual materials (such as additional adhesive) is made redundant, significantly reducing logistical overheads, set-up times and maintenance breaks, as well as considerably reducing production costs and cleaning overheads. This means the innovative furniture edge becomes a winner both visually and commercially.

<sup>1</sup> Laser joining is patent protected in Germany by Bult-haup. Their agreement is required for use in Germany.

### Your benefits

- **Universal:** a high-performance edge for all joint technologies
- **Invisible:** perfect appearance thanks to jointless transition
- **Practical:** no additional hotmelt adhesive required
- **Elaborate:** heat and moisture resistant
- **Efficient:** time and cost-saving
- **Economical:** high production reliability and increased productivity
- **Matured:** best initial adhesion through optimised energy requirement



Fusion-Edge for all joint technologies – also for BAZ machining centre applications.

Your way to jointless edges:  
[www.fusion-edge.de](http://www.fusion-edge.de)



# Technology report by Döllken.

New opportunities for contemporary furniture production.

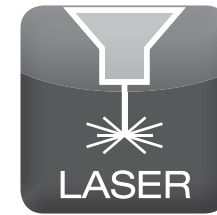
## Intelligent technology within – Fusion-Edge from Döllken

A seamless joint, no additional use of hotmelt adhesive, higher production reliability and increased productivity – all this is rendered possible by the new joint methods. A new edge technology is also required for using small surface area coating methods. In Fusion-Edge, Döllken has designed for this application a completely new edgeband generation that creates a jointless unit of

worktop and edge without the need for any additional hotmelt adhesive at all.

Fusion-Edge works with all currently available innovative joint technologies and heat sources. This is in addition to the familiar laser technology<sup>1</sup>, the plasma and hot-air technologies. This means the high-performance edge from Döllken covers all innovative bonding technologies.

<sup>1</sup> Laser joining is patent protected in Germany by Bulthaupt. Their agreement is required for use in Germany.



## Laser technology<sup>1</sup>

Laser systems have been in use for several years and are established on the worldwide market. A few hundred laser systems have already

been installed. Diode lasers from Homag and IMA are the most popular variants. Döllken has ensured that their edgebands are easy to work with for these machines. Edges can be processed with low energy due to the specially optimised functional layer composition optimised in many iteration steps. But yet more is possible – in addition to edgebanding machines, lasers are also ready for volume production for machining centre (BAZ) applications.



## Plasma technology

About 2 years later, plasma technology (for example Düstec) succeeded in entering the market. This technology works with several

plasma nozzles to guarantee both the softening effect of the functional layer as well as the covering of the different workpiece heights. In the future this technology will be available for different feed speeds, something that will also have a positive impact on investment costs.

Particularly pleasing is that the premium coating of the Fusion-Edge now lends itself perfectly to the plasma method. Here adhesion values, appearance and joint thickness on a comparable level as the laser method are attained. Furthermore, there is no visible colour change due to temperature exposure on the reverse side of the edgeband. This could never be ruled out on standard market edgebands.



Perfect appearance – modern furniture with seamless joint.

Compatible with all currently available joint technologies and heat sources.



## Hot-air technology

The latest development is the modified hot-air technology, such as that from Schugoma. Here very hot compressed air, several hundred degrees

in temperature, is used to melt the functional layers of edgebands. The hot air perfectly melts the co-extruded Fusion-Edge with its premium coating.

<sup>1</sup> Laser joining is patent protected in Germany by Bulthaupt. Their agreement is required for use in Germany.





# KSP 2.0

Completely new – the service and product promotion from Döllken.

### Trouble-free all the way with KSP 2.0 from Döllken

Perfect decor combination from our stock programme, excellent availability and speedy delivery of the right matches to the leading board manufacturers are all a matter of course for us.

Everything from a single source – requirement based, delivered quickly and especially for you.

### More than an update

To support our trading partners, the Instant Edging Programme has been totally revised and now offers an enormous diversity of breadth with decor consistency over all dimensions, with deliveries from one metre (also for premium edgebands) – and added to the list are perfectly matching adhesives.

Moreover we, as the edgeband manufacturer, offer you the option of ordering small custom volumes from our Quick Shot Programme. We produce for you your very own dream edge.



Döllken hotmelt for perfect results.



Widths from 23 to 100 mm in stock.



Perfect decor combination of board and edge.



Edges from just 1 metre in length are available.



New: all edges matching the new Pfeleiderer and Kronospan collection are available from stock

### The dream pair

The ideally matched hotmelt from Döllken for perfect bonding results in skilled trade applications. Granulate and cartridges in the most popular colours are available immediately from stock.

### How about something a little less?

With immediate effect, the tiresome storage of leftover quantities is consigned to the past. We supply needs-based quantities – from the first metre and just-in-time for your project.

### Everything's possible

The Quick Shot Programme means you are able to order any colour/decour, texture and dimension combination from 450 metres upwards. Your desired decour is produced specially for you. And that's not all. We also promise you an unbeatable production time of just 5 workdays.

Unique in diversity and availability.

### Your benefits

- **Matched:** edgebands and adhesives from one source
- **Quick:** edgebands from just one metre available within 24 hours
- **Reliable:** consistent print and colour uniformity covering all widths
- **Individual:** small volumes produced for you from an unlimited colour pool

Your fast way to the right edge:  
[www.kanten-finder.de](http://www.kanten-finder.de)





# Surface textures tangibly bring edgebands to life.

The new texture variations from Döllken.

### Furniture with character

They make furniture visually distinctive and bring it tangibly to life – deep and prominent surface textures are the trend and so are a permanent feature of all decor programmes. Döllken offers its customers over 20 different texture variations.

### Your benefits

- **Impressive:** a visual and tangible experience
- **Continual:** on-going enhancement of surface textures
- **Original:** combination textures and gloss levels



"Natural Stone" texture.

### "Natural Stone" texture

- **Selected:** especially for worktops
- **Expressive:** especially aesthetic appearance
- **Natural:** process of stone metamorphism perfectly reproduced

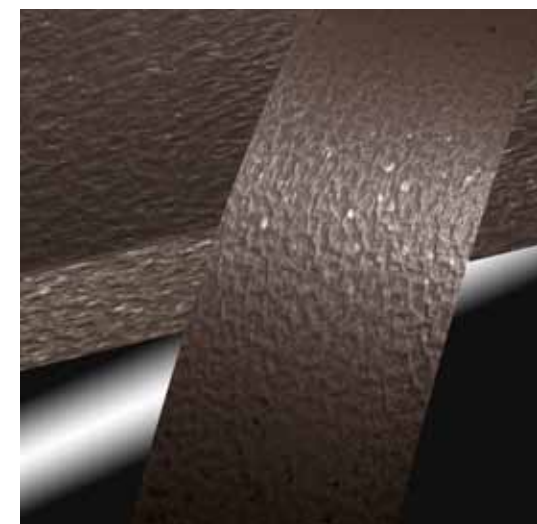


"Natural Wood" texture.

### "Natural Wood" texture

- **Revitalised:** old wood rejuvenated
- **True to detail:** individual character perfectly reproduced

Edgebands that become an impressive experience.

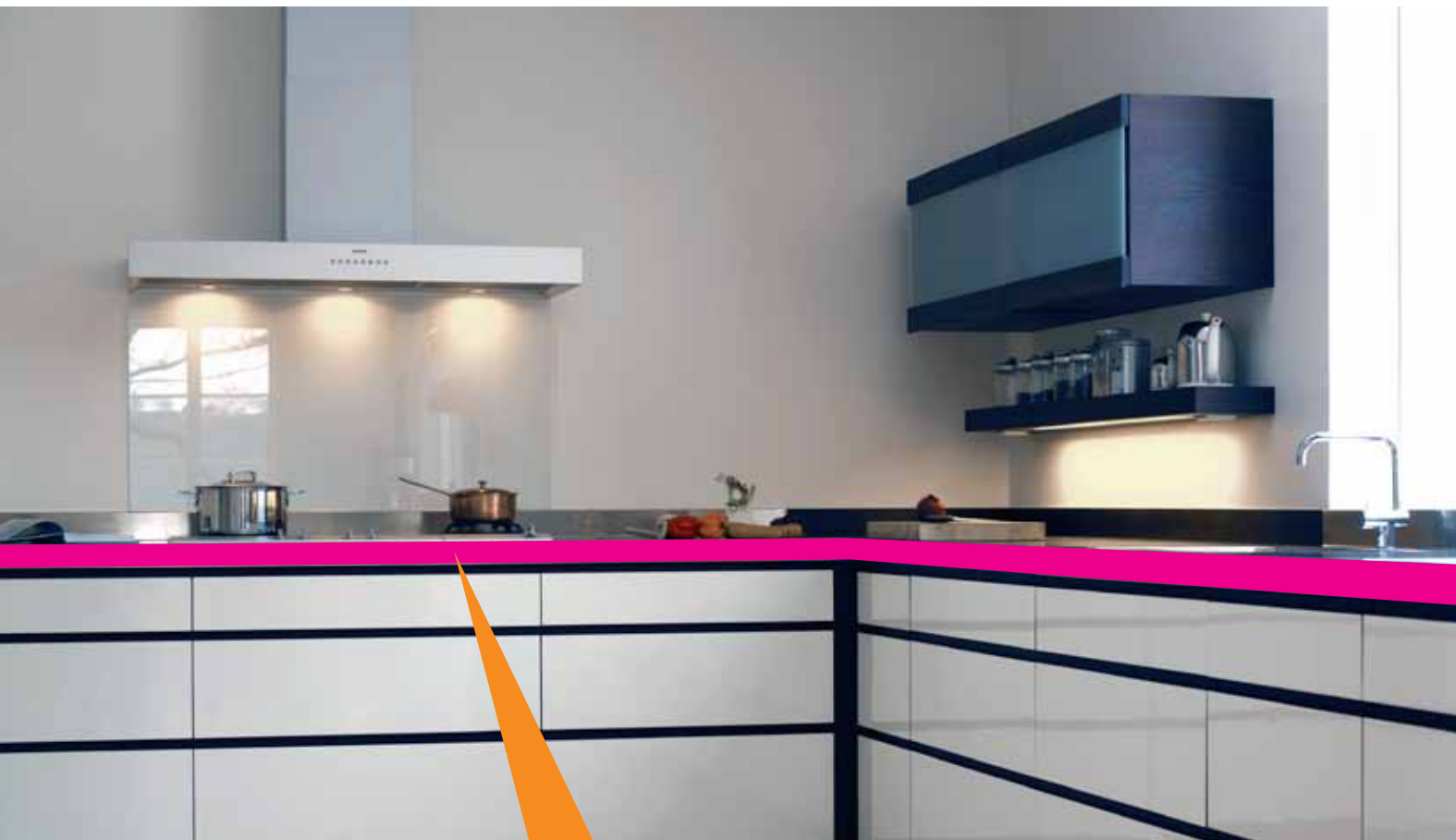


"Mica" texture.

### "Mica" texture

- **Mellow:** velvety surface with dull matt top coat in combination with a stone texture
- **Striking:** partial gloss finishing
- **Double:** texture with two levels of gloss





## Impressive appearance with depth effect.

3D edges – the originals from Döllken for high-end furniture.

### The ultimate in high gloss

The 3D premium gloss edge is the perfect solution for all those who love high gloss surfaces but do not want to forego the functional properties of a modern furniture edge.

A no-compromise solution satisfying the highest of expectations.

### Your benefits

- **Custom-made:** perfect matching to the gloss level and the decor pattern of the top
- **Surface resistant:** robust to mechanical and chemical effects
- **Individual:** edgeband solutions available for a wide array of requirements and needs
- **Practical:** no additional polishing necessary



## The perfect symbiosis.

The 3D-Duo-Gloss edge features dual levels of gloss.

### Appealing matt-gloss appearance

Two levels of gloss on one edge in perfect unity – this spectacular effect becomes impressive reality with the 3D-Duo-Gloss edge. Whilst the top area of the edgeband generally continues the high gloss appearance of the top surface, the lower edge part has a trendy frosted glass appearance. A particularly innovative way of how design and technology can be united – illuminated tops with Döllken 3D-2in1 edge for the perfect illumination of objects and rooms.

### Your benefits

- **Impressive:** unique effect with differences in gloss level
- **Enhancing:** increases value
- **Realistic:** natural effect, even for simulated material mix



Döllken 3D edges.





## Clever alternative to real glass.

The glass appearance 3D-2in1 edge is particularly easy to work with.

### Much in demand, 3D-2in1 matching high gloss wood decor

For high-end furniture, the 3D-2in1 edge is the perfect alternative to ABS high gloss edgeband. It is reassuring to know that over 40 high gloss 3D-2in1 edges, matched to leading manufacturers (such as Topform, Senosan, Alvic and Formica) are available from the Instant Edging Programme. Single colours are combined mainly with high-grade steel, but the wood decor-steel variation is also much in demand.

#### Your benefits

- **Impressive:** superior glass look
- **In stock:** over 40 variants of the 3D-2in1 edge from the Instant Edging Programme available immediately
- **Compatible:** simple integration into any room concept

Glass set perfectly in scene.



## Perfection in every detail.

The 3D-3in1 edge features an impressively brilliant look and practical subtleties.



Döllken 3D-3in1 edge.

### The edge for surface-flushed doors

With the 3D-3in1 edge, doors gain in value as a result of the metal grain appearance. The innovative edge is designed perfectly for use with surface-flushed doors.

The ideal solution for a flush surface finish.

#### Your benefits

- **Ingenious:** dual notching
- **Impressive:** visual division
- **Premium-quality:** metal grain appearance





## Resistant to scratches and marks.

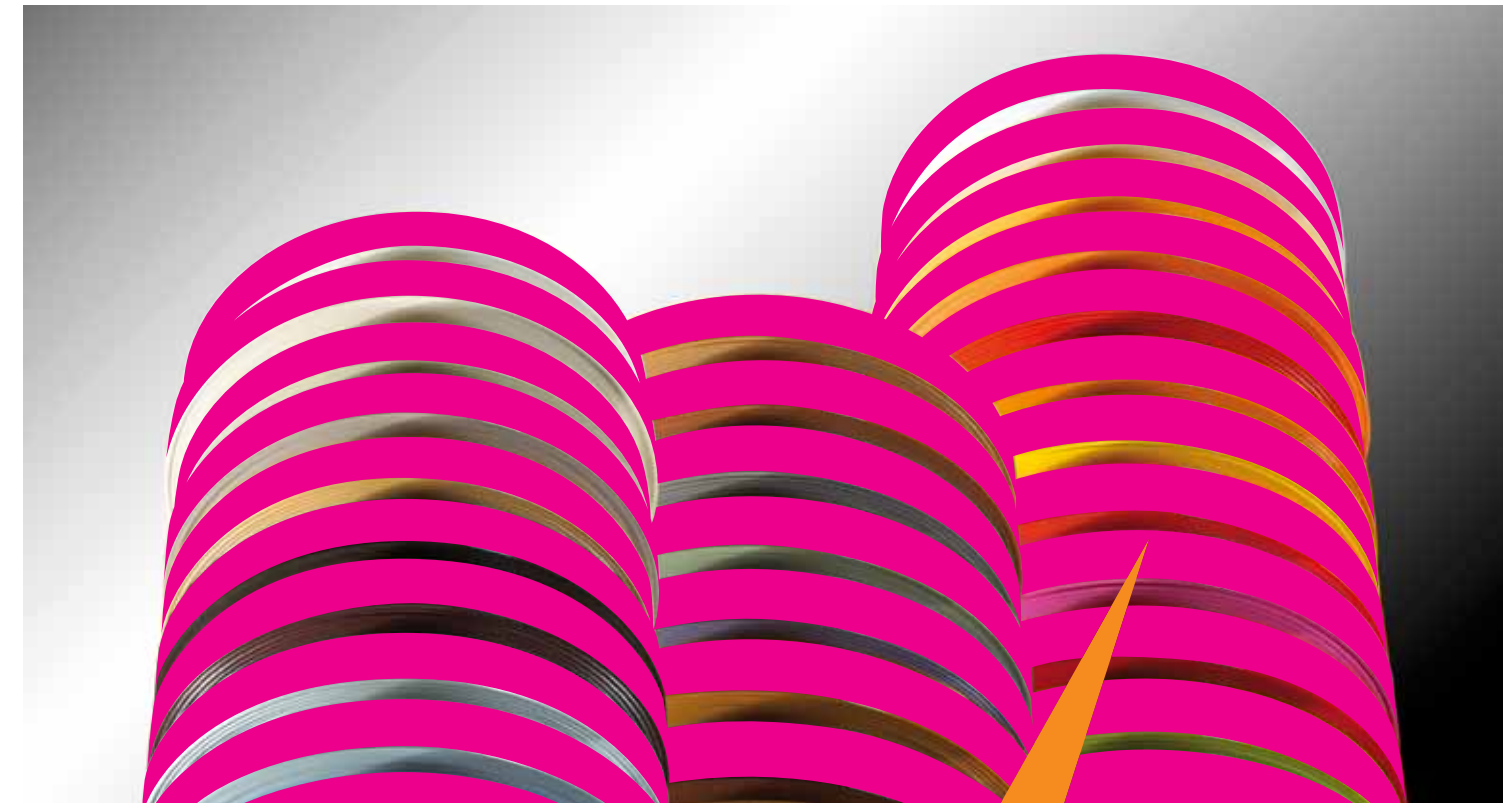
Ultra matt edges from Döllken feature outstanding surface properties.

### A real sensation from Döllken

Never before available – ultra matt surfaces for thermo-plastic edgebands that are absolutely resilient to scratches and marks. This dream has finally become reality with ultra matt edges from Döllken. Fabricators and customers alike benefit from this development because the innovative surface technology means production is considerably easier and quicker, and the service life of edges is prolonged.

### Your benefits

- **Innovative:** latest technology for outstanding surface properties
- **Quick:** improved key production figures thanks to uncomplicated machining
- **Durable:** even after years, looks just as good as on the first day



## The matching edge for everyone.

Gloss with “Premium-High-Gloss” top coat.

### How colours gain that certain something

With high gloss edges, every piece of furniture becomes a real eye-catcher in the room. The superior “Premium-High-Gloss” top coat ensures that colours not only look good on the edge but are also positively resplendent. It is reassuring to know that over 70 high gloss colours and decors are now available in the Instant-Edging-Programme.

### Your benefits

- **Striking:** “Premium-High-Gloss” for single colours and wood decor
- **Extensive:** over 70 colours and decors available in the Instant-Edging-Programme

High gloss surfaces continue to be the trend.



Trendy colours available in high-gloss.





# The most innovative design centre in the industry.

Pay us a visit in Venice!

## A breath of fresh air in the world of decor

Be it cheeky, colourful or conservative, the Venice Design Centre of the SURTECO Group in Mestre/Italy keeps launching creations that spark trends and revolutionise the world of decor. The broadest array of surface materials, from decor paper and foils to edgebands made of plastics and melamine, are combined with each other and shown impressively in their best light.

Special decors are explored as well as created at the Venice Design Centre. For example, interested experts are able to experience close up the unusual product innovations in the former warehouse at the



Pay us a visit in Venice!

port of Mestre near Venice. The product presentation is as unusual as the decor itself and is themed "We dress furniture". As in the world of fashion, decor hangs on hangers or like flags from the ceiling, and display windows invite visitors in to browse.

## Experience with all senses

The senses of the visitor are invigorated in a unique way in the Venice Design Centre. The eyes experience new inspiration from every angle. Speaking walls lead one into a world of most recent decor developments. Hands feel multi-layered textures and surfaces.

## Intensive collaboration with Niederrhein College

As part of a design workshop with digital colour matching on site, original decors were developed in collaboration with the Design department at Niederrhein College in Krefeld.



Döllken in the Venice Design Centre in Mestre/Italy.

## Design workshops in Venice.



Bausch decor | BauschLinnemann at the Venice Design Centre in Mestre/Italy.



# Sustainability makes the difference

Döllken edgebands are GREENGUARD certified across the globe.

## Consumers are behind sustainability

Customers are increasingly measuring the quality of furniture by its ecological footprint. However, complex production processes often make it difficult for consumers to make this assessment. The prestigious GREENGUARD certification programmes represent a reliable guide.

## All Döllken plants across the globe tested and certified

Döllken has had the emission values of its thermoplastic edges (ABS, PMMA, PP and PVC) tested by the GREENGUARD Children & Schools certification programme – and has received worldwide certification. And we can show off this award with some pride because the certification programme contains the most demanding of test criteria for products that are also used within the immediate vicinity of children.



Conserving resources and protecting the health of individuals – these are the uppermost goals.



Döllken-Kunststoffverarbeitung GmbH  
Beisenstr. 50 · 45964 Gladbeck · Germany  
Tel.: +49 (0)2043 979-0 · Fax: -587  
info@doellken.com · www.doellken-kv.com

# DÖLLKEN

A SURTECO BRAND