

### Specifications:

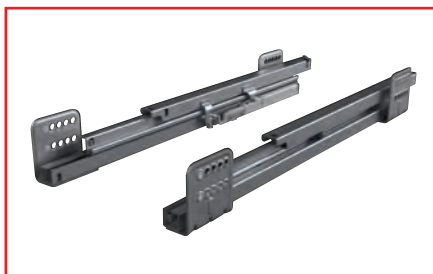
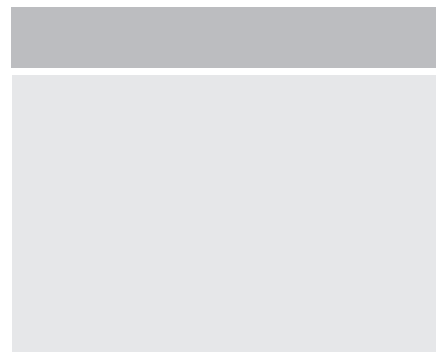
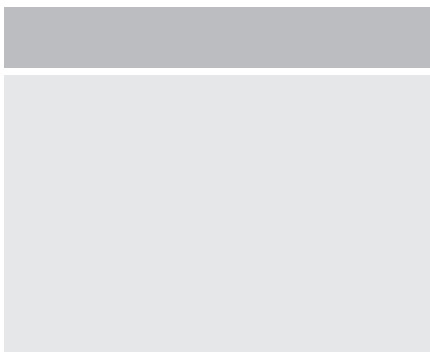
- Improved soft closing system guarantees smooth running
- 40 kg dynamic load capacity
- $\pm 2$  mm up/down,  $\pm 1.5$  mm right/left adjustable
- .68mm backboard height
- White and grey colour options
- Wood backboard thickness 16 mm
- 270/300/350/400/450/500/600 mm drawer length
- Smart-Click : front panel toolless assembly/disassembly
- SmartFit easy toolless drawer removal and fitting
- Long service life

### Package:

1. Smartbox slide (right-left)
2. Smartbox side (right-left)
3. Backboard holder (right-left)
4. Front connector pieces (2 pcs)
5. Decorative cover (2pcs)

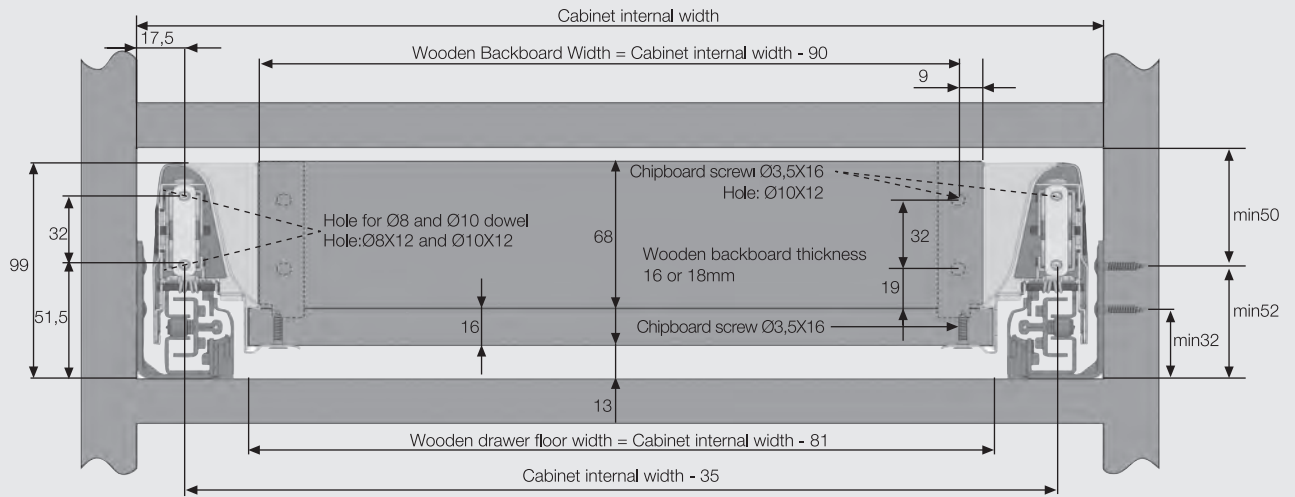
### New Smart Box 40kg.

| Nominal Size | Packaging Type | Colour Grey | Colour White |
|--------------|----------------|-------------|--------------|
| 270mm.       | 1 Set          | 127139213   | 127139211    |
| 300mm.       | 1 Set          |             | 127139221    |
| 350mm.       | 1 Set          | 127139233   | 127139231    |
| 400mm.       | 1 Set          |             | 127139241    |
| 450mm.       | 1 Set          | 127139253   | 127139251    |
| 500mm.       | 1 Set          | 127139263   | 127139261    |
| 550mm.       | 1 Set          | 127139273   | 127139271    |
| 600mm.       | 1 Set          |             | 127139281    |

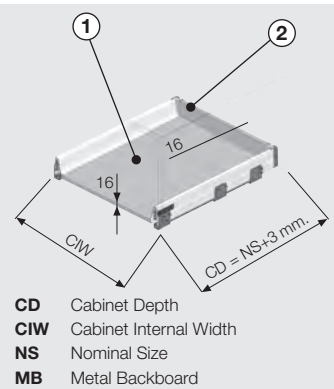


\*Smartbox slide for 270-550mm length

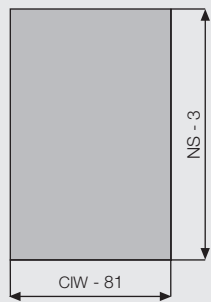
### Requirement for Place In The cabinet



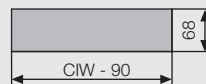
### Wooden Backboard Application



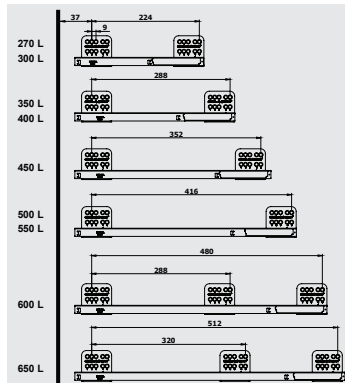
#### 1. Wooden Drawer Floor Width



#### 2. Wooden Backboard



### Screw Locations for the Slides



\* All dimensions in the diagram are in mm.