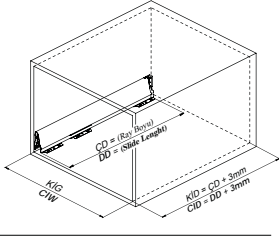
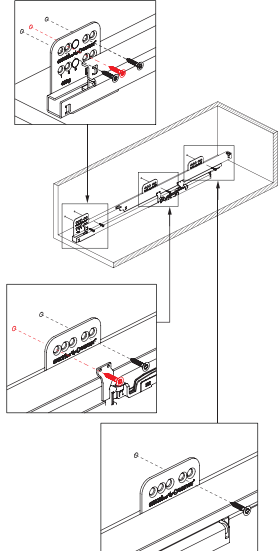


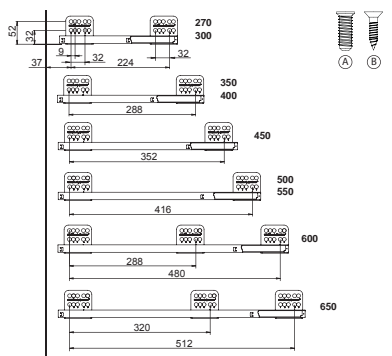
Kabin Ölçüleri
Cabinet Dimensions



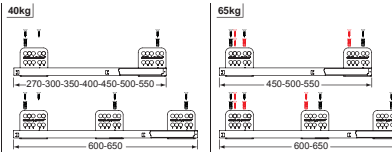
Ahşap Vidası ile Montaj
Assembly the Slide with Wooden Screw



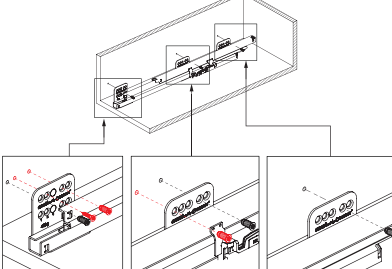
Rayların Vida Konum Ölçüleri
Screw Location for the Slides



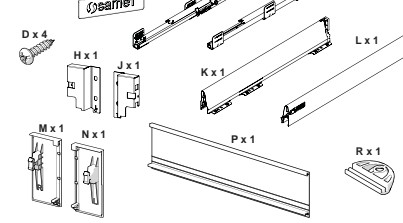
Rayı, koyu renk ile gösterilen yerlerden vidalayınız.
Screw the slide from marked holes.



Euro Vidası ile Montaj
Assembly the Slide with Euro Screw

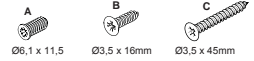


Parçalar
Parts

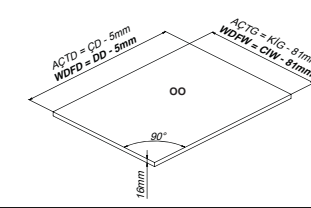


Kabin İç Genişliği : KIG	Cabinet Internal Width : CIW
Kabin İç Derinliği : KID	Cabinet Internal Depth : CID
Çekmece Derinliği : CD	Drawer Depth : DD
Ray Uzunluğu : RU	Slide Length : SL
Ah.Çek.Tabanı Derinliği : AÇTD	Wd. Drw. Floor Depth : WDFD
Ah.Çek.Tabanı Genişliği : AÇTG	Wd. Drw. Floor Width : WDFW
Ah.Arkalık Genişliği : AAG	Wd. Backboard Width : WBW

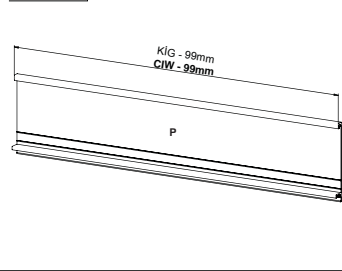
Tavsiye Edilen Vidalar
Recommended Screw



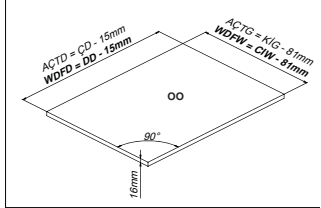
Ah. Çekmece Tabanı
Wd. Drawer Floor



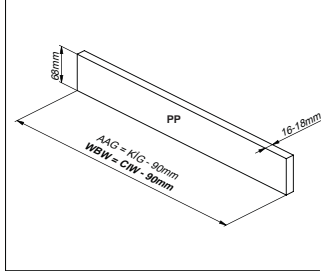
On Panel
Front Panel



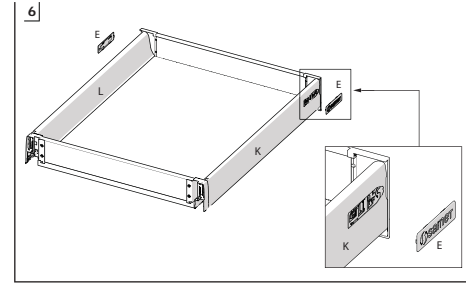
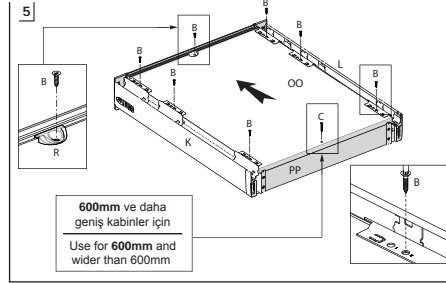
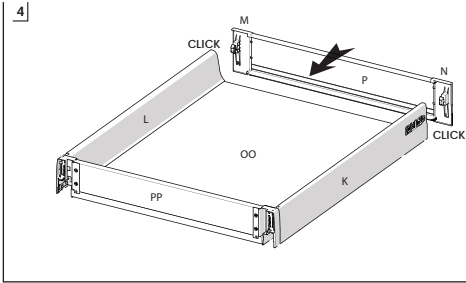
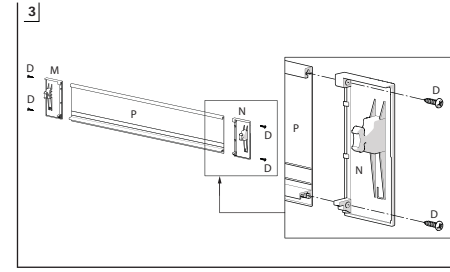
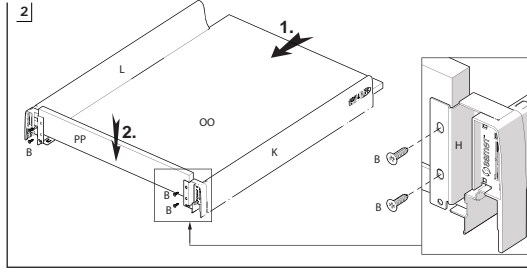
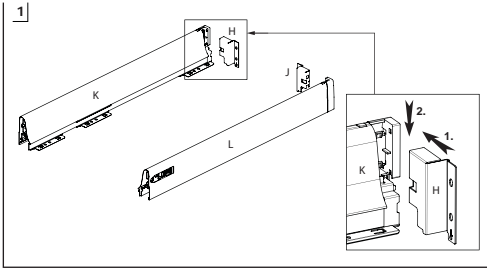
Ah. Çekmece Tabanı
Wd. Drawer Floor



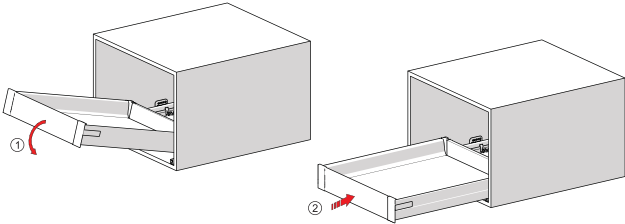
Ahşap Arkalık
Wd. Backboard



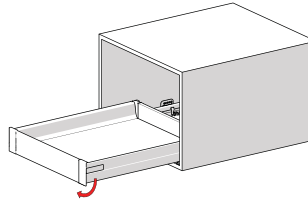
- 2 -



Çekmece montajı
Drawer mounting



Çekmece demontajı
Drawer demounting



Kilit traşığı kapanması durumunda | If the lock slots shut down due to system failure | 1

Ön paneli çıkarmak için | Removing the front panel | 2

